

## Adaptation of infectious bronchitis virus in primary cells of the chick embryo chorioallantoic membrane

M.H. Mohammed<sup>1,2\*</sup>, M. Hair-Bejo<sup>1</sup>, A. Zahid<sup>2</sup>, A. Alazawy<sup>3</sup>,  
E.A. Abdul Ahad<sup>4</sup> and M.F. Hasoon<sup>5</sup>

<sup>1</sup> Faculty of Veterinary Medicine, Universiti Putra Malaysia 43400 UPM Serdang, Selangor, Malaysia, <sup>2</sup> College of Veterinary Medicine, Baghdad University, <sup>3</sup> Faculty of Veterinary Medicine, Diyala University, <sup>4</sup> College of Veterinary Medicine, Sulaimania University, <sup>5</sup> Scientific Research Centre, Faculty of Science, Duhok University  
\*Corresponding author's email: majed\_mohammed@putra.upm.edu.my

(Received June 17, 2012; Accepted March 31, 2013)

### Abstract

The susceptibility of the primary chick embryo chorioallantoic membrane cells to infectious bronchitis virus was evaluated after twenty consecutive passages in chick embryo chorioallantoic membrane cells. Virus replication was monitored by cytopathic observation, indirect immunoperoxidase, and reverse transcription polymerase chain reaction (RT-PCR). At 72 hours post-infection (p.i) in third passage, the cytopathic effect was characterized by rounding up of cells, monolayer detachment, intracytoplasmic brownish colouration was readily observed by immunoperoxidase from 24 hours p.i in third passage, and at all times the extracted viral RNA from IBV-infected monolayers was demonstrated by RT-PCR. Tissue culture ineffective dose<sub>50</sub> (TCID<sub>50</sub>) was used to measure virus titration performed on primary chick embryo chorioallantoic membrane cells and the titre in twenty passage was 10<sup>8.6</sup> TCID<sub>50</sub>/ml. The results obtained in this study suggested that the primary chick embryo chorioallantoic membrane cells can be used for adaptation infectious bronchitis virus (IBV) and may be considered a step forward for the use of these cells in the future for IBV vaccine production

**Keywords:** Infectious bronchitis virus; Chick embryo; Chorioallantoic membrane.

Available online at <http://vetmedmosul.org/ijvs>

### تكيف فايروس التهاب القصبات المعدي على النمو في الخلايا الابتدائية لغشاء اللقائقي المشيمي المعزول من اجنة البيض

ماجد حميد محمد<sup>١،٢</sup>، هير بيجو<sup>١</sup>، عبد الامير زاهد<sup>٢</sup>، عامر الغزاوي<sup>٣</sup>، عماد ادور<sup>٤</sup>، ومياده فواد حسون<sup>٥</sup>

<sup>١</sup> كلية الطب البيطري، جامعة بتر المايزية، <sup>٢</sup> كلية الطب البيطري، جامعة بغداد، <sup>٣</sup> كلية الطب البيطري، جامعة ديالى، <sup>٤</sup> كلية الطب البيطري، جامعة السليمانية، <sup>٥</sup> مركز البحوث العلمية، جامعة دهوك

### الخلاصة

تم في هذه الدراسة تقييم حساسية الخلايا الابتدائية المعزولة من الغشاء اللقائقي المشيمي لاجنة البيض وحقتها بفايروس التهاب القصبات المعدي. وقد استخدمت كل من المعايير التالية التأثير الخلوي واختبار انزيم فوق الاس الهيدروجين المناعي الغير مباشر واختبار سلسلة تفاعل البلمرة (RT-PCR) لتقييم اصابة الخلايا بالفايروس. وبعد ٧٢ ساعة من الاصابه في التمرير الثالث تميز الاعتلال الخلوي للخلايا المصابه بانها اصبحت دائريه اضافه الى تحررها وطوفانها اما في اختبار انزيم فوق الاس الهيدروجين المناعي فقد تميز بظهور اللون البني في السايروبلازم بعد ٢٤ ساعة من الاصابه في التمرير الثالث في حين اظهر اختبار سلسلة تفاعل البلمره نتيجته موجبه ولجميع التمريرات. وظهرت النتائج ان هذه الخلايا يمكن ان تستخدم لعزل وتضعيف الفايروس كما يمكن ان تستخدم في تحضير اللقاح في المستقبل.

## **Introduction**

Infectious bronchitis virus (IBV) infects the respiratory tract, kidneys and oviduct of chickens of all ages, causing retarded growth, mortality, reduced egg production and inferior egg shell quality and in many countries the disease remains one of the main problems affecting existing or developing poultry industries. Until now, there is no cure for the disease (1). Prevention is to import birds from disease-free flocks only or through vaccination, broilers are normally vaccinated at 1 day of age with live attenuated vaccines (2). In addition, breeders and egg layers are also vaccinated at approximately 8 week intervals with live attenuated vaccines, and with inactivated vaccines after they start laying eggs (3). Acute Infectious bronchitis virus are usually detected by the indirect immunoperoxidase test, enzyme-linked immunosorbent assay, virus isolation or serological approaches (4,5). However Infectious bronchitis virus infections can also be diagnosed by detection of viral RNA by RT-PCR, which make the diagnostic rapid and also dependable (6,7). Usually, Infectious bronchitis vaccines have been produced by growing vaccine virus strains in embryonated chicken eggs. Infectious bronchitis virus is harvested from the allantoic fluid and used to create a vaccine, nevertheless this method has the disadvantages of being labour-dense, takes long time and requires large area for the incubation of eggs. Cell cultures on the other hand considered are more suitable and less expensive than eggs and also convenient to inspect microscopically for indication of viral proliferation (5,8). There is therefore an urgent need to improve on the current Infectious bronchitis virus vaccines production technologies based chick embryo chorioallantoic membrane (CAM) cells. The development of cell-culture platforms as an alternative to the eggs for the manufacture of IBV vaccines is likely the most rapid and promising solution to overcome current vaccines production. In this study, firstly we investigated here for the first time the ability of IBV to grow in chorioallantoic membrane cells and second to detect titres of IBV in chorioallantoic membrane cells plus the possibility to use these cells for vaccine production in the future

## **Materials and methods**

### **Virus inoculation**

The stock of IBV was originally obtained from the Faculty of Veterinary Medicine, University Putra Malaysia. This virus was isolated from the allantoic fluid of embryonated chicken eggs. Initially, 0.3 ml of the virus stock was diluted in 30 ml of 10x PBS giving a dilution of 1:100. This diluted virus was used to inoculate primary chick embryo chorioallantoic membrane cells. Fully

confluent 25 cm<sup>2</sup> flasks of cells were used for virus passage in an attempt to adapt the virus to replicate in these cells.

### **Cells and media**

Primary chick embryo chorioallantoic membrane (CAM) cells were prepared from 9- to 10-day-old specific pathogen free (SPF) chick embryo. The chorioallantoic membranes were collected, washed with phosphate buffer saline and digested with trypsin/EDTA. The reaction was stopped by adding (Dulbecco's Minimal109 Essential Medium (DMEM) complete growth medium (GIBCO Laboratories, USA) supplement with; 2.0 g NaHCO<sub>3</sub>, 10% fetal calf serum (FCS) and 1% antibiotic of penicillin-streptomycin. After centrifugation at 1000 g for 10 min, the chorioallantoic membrane cells were resuspended in the same medium and filtered through sterile gauze. The chorioallantoic membrane cells in the filtrate were distributed on plastic tissue culture flasks and incubated at 37 °C with 5 % CO<sub>2</sub>.

### **Tissue culture infective dose 50 (TCID<sub>50</sub>)**

The infectivity of replicate infectious bronchitis virus to chorioallantoic membrane cells were determined by calculating 50% end point, as described by Reed and Muench (9). Ten-fold serial dilution of IBV was prepared in phosphate buffer saline phosphate buffer saline from 10<sup>-1</sup> to 10<sup>-10</sup>. A 96 well tissue culture microtitration plate (Titertek, UK) was used to prepare chorioallantoic membrane cells monolayers. A 100 µl of each virus dilution was added in each well of first row leaving last two wells as negative control. The plate was incubated at 37°C for 1 hour to allow adsorption. Then 100 µl of prewarmed maintenance medium was added in each well and again incubated at 37°C in 5% CO<sub>2</sub>. The plate was observed twice daily for CPEs. The cells were stained with 1% crystal violet solution to determine the CPE. The highest dilution of virus showing 50% CPEs was considered as end point to calculate TCID<sub>50/ml</sub>.

### **Indirect Immunoperoxidase Staining Test**

The indirect immunoperoxidase test (IIP) was done according to the method of de Wit et al. (4). The infected chorioallantoic membrane cells were fixed with cold methanol: acetone (50:50 volum/volum) for 5 mins. The glass slides were then immersed in 1% hydrogen peroxide in absolute methanol for 30 mins. The phosphate puffer salain was then added to the glass slide for 15 mins. The glass slides were then air dried. The hyper immune serum was diluted 1:1000 with PBS and added to the glass slide incubated for 1 hour in room temperature. The glass slides were then washed 3 times with phosphate puffer salain for 5 mins each. The rabbit anti-chicken IgG-HRP conjugated secondary antibody (Bio-Rad, USA) was then added to the

glass slides (1:1000) and incubated for 1 hour at room temperature. DAB substrate solution (DAB reagent set, Invitrogen, USA) was then added to the glass slides and incubated for 10 minutes in a dark room. The slides were mounted with buffer glycerol and examined under light microscope.

**RNA isolation**

RNA was isolated from infected cells using commercial RNeasy Mini Kit (Qiagen, USA) as recommended by the supplier.

**Reverse transcription polymerase chain reaction (RT-PCR)**

For RT-PCR the infected monolayers were submitted to detect IBV replication, the partial spike (S1) gene (1025 nucleotides) of IBV was amplified RT-PCR after different passages according to the manufacturer’s recommendation (Takara). The specific primers for IBV S1 gene were designed according to IBV H52 sequence (accession number AF3523151) as follows: forward, 5-CTATGTAGTGCTGTTTTG-3 (nucleotides 42 to 59); reverse, 5-CCTTGAAGAGG ACCGTAA-3 (nucleotides 1049 to 1066), and the RT-PCR was run 30 min at 50°C and 2 min at 94°C for one cycle, then 30 cycles of 30 sec at 94°C, 30 sec at 55°C, 1.5 min at 72°C, followed by 15 min at 72°C (PTC-100TM Programmable Thermal Controller; MJ Research, Inc.) (6).

**Detection of PCR products**

PCR products were separated in 1.5% agarose gel in 1 x TAE buffer stained with ethidium bromide, compared with molecular mass marker and visualized by ultraviolet (UV) transillumination.

**Results**

**Cytopathic effect (CPE)**

Infected cell monolayer steadily became broken as the virus proliferates to occupy extra cells in culture. In the first and second passage, the infectivity was sluggish and not very clear as the virus was just begin to adapt on cells. Through the third passage, we were able to visualize cytopathic effect but it was not whole (localized) the cells. During the fourth and fifth passage, cytopathic effect was rapid and detached in two days. It was characterised by rounding of cells, failure of cell adhesion, vacuolization in cells, clustering of infected cells (Figure 1).

**Virus titration**

The infectivity titre of the virus was found to increase gradually from the 5th to the 20<sup>th</sup> passage. The TCID<sub>50</sub> titre was 8.6 after 20 passages (Table 1).

**Indirect Immunoperoxidase Staining Test (IIPS)**

In IIPS, brown complexes were seen as brownish intracytoplasmic granules around the nucleus (Figure 2) in infected chick chorioallantoic membrane cells cultures treated with IBV antiserum, but such effects was not seen in control cell cultures.

Table1: Virus titer determined by Tissue Culture Infective Dose<sub>50</sub> (TCID<sub>50</sub>).

Virus category and passage level	Virus titre TCID <sub>50</sub> /ml
Virulent-unadapted	
5	6.5
10	7.4
15	8
20	8.6

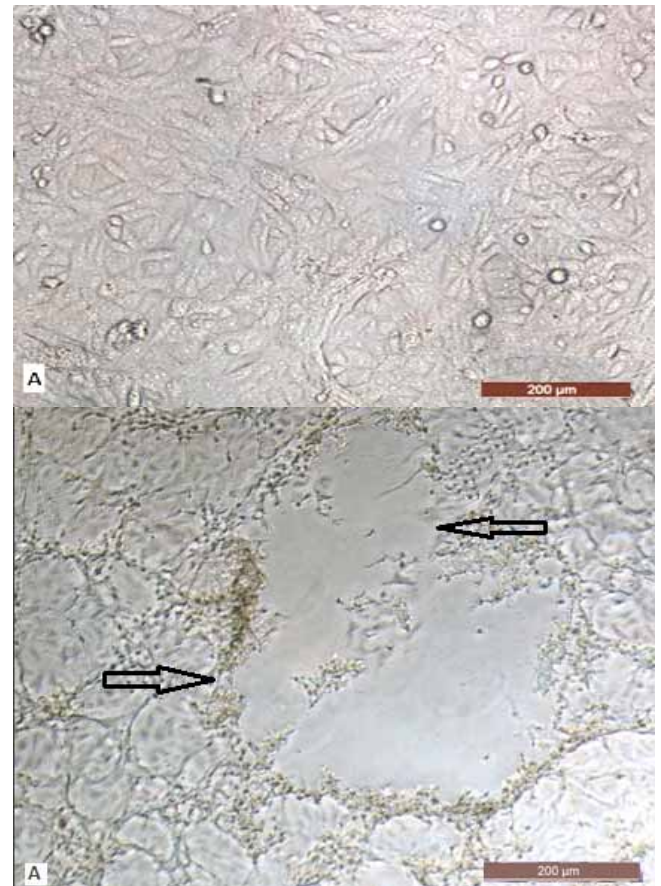


Figure 1: (A) Uninfected control CAM cells monolayer. (B) Cytopathic effect of IBV isolate of the 3<sup>rd</sup> passage at day 5 pi. The arrows show detachment of cells from the substrate with the eventual destruction of the entire monolayer. 10 x. Bar = 200 µm.

### RT-PCR

RT-PCR of different passages at passages 2, 5, 10, 15 and 20 were performed. The expected 1025 bp was obtained for each passage examined (Figure 3).

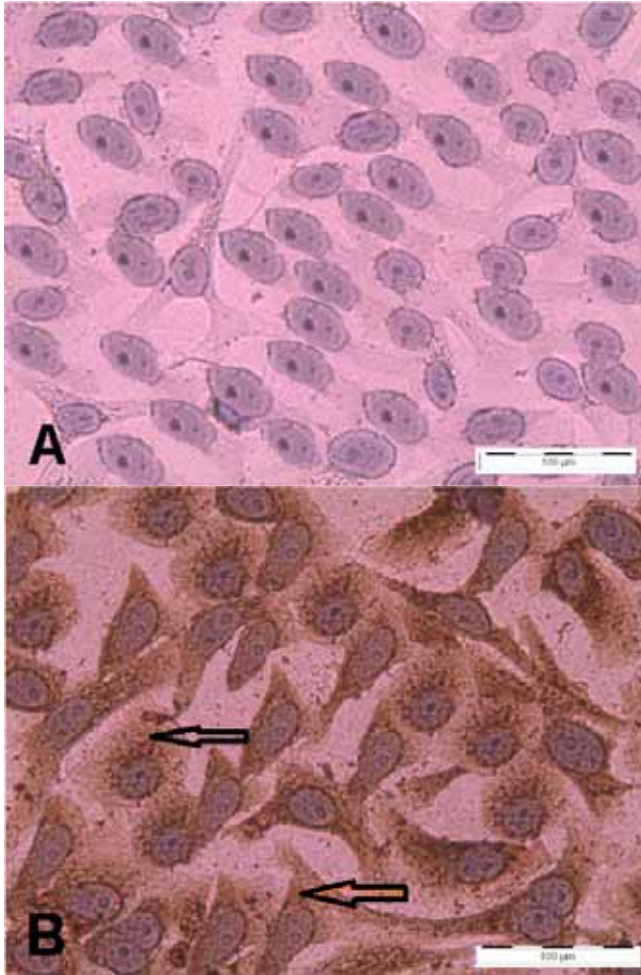


Figure 2: Identification of IBV in CAM cells culture using infected cell cultures stained with HRP-conjugated antibody. (A) Uninfected control CAM cells. (B) CAM cells infected with IBV at 3<sup>rd</sup> passage at day 5 pi. The arrow shows the presence of specific intracytoplasmic brownish coloration IBV antigens. 10x. Bar = 100 μm.

### Discussion

Infectious bronchitis (IB) virus, early described in 1930 (10), continues to be a main cause of disease in chickens of all ages and types in all parts of the world (11,12). The disease is occurring in all countries with a concentrated poultry industry, with the occurrence of infection close to 100% in most locations (13). Most of the countries rearing poultry commercially rely on vaccination to control IB, but

the vaccine is still a great challenge for these countries because of the wide variety serotypes for this virus.

A large majority of the vaccines available are chick embryo-adapted vaccines. Cell cultures provide a useful alternative system for the virus preparation and adaptation, and find a suitable cell culture for IBV (14).

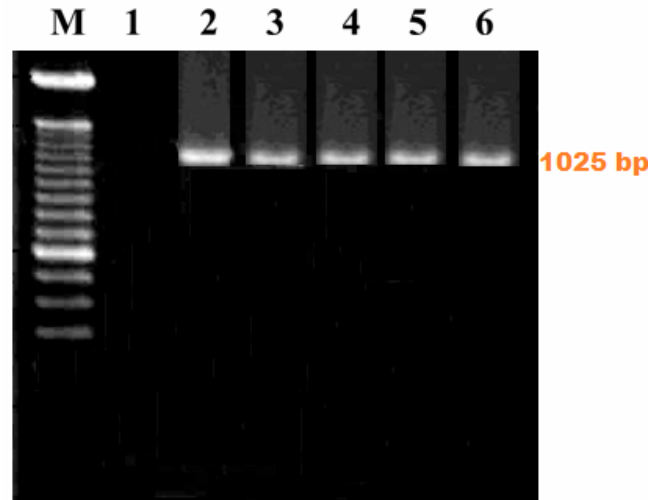


Figure 3: S1 gene (1025 pb) of IBV. Lane 1 Negative control; Lane 2 positive passage 2; Lane 3 positive passage 5; Lane 4 passage 10; Lane 5 positive passage 15 and Lane 6 positive passage 20 ; M- 100 bp DNA marker (Promega, USA).

In the present study, attempts were made to adapt IBV isolate by blind passage first in SPF embryos (15) and then adapted to the CAM cells until 20<sup>th</sup> passages. The cytopathic effects (CPEs) appeared after 72 hours of infection in third passage and this observation was also noticed by (16), but slightly varied from findings of Mahgoub et al. (12) where the IBV was adapted to Vero cell line after the third passage.

The difference might be due to the cell culture passage level of the virus strains used or variation in sensitivity of cell culture to different strains.

The total infectious titer passage 20 was found to be  $10^{8.6}$  TCID<sub>50</sub>/mL. These finding supports the previous report by (17) as they found titer  $10^9$  TCID<sub>50</sub>/mL in passage 25 in Vero cells.

The classical method of detecting adaptation and replication of IB virus in the cell culture using the cytopathic effect was augmented in this study with indirect immunoperoxidase is a relatively inexpensive and rapid method (18). Monoclonal antibody (Mab) reacting only with one or small number of epitopes of the IBV antigen, results in viral antigen was observed as brownish intracytoplasmic granules in CAM cells (18).

RT-PCR has been used widely as a rapid, sensitive, specific, and high throughput methodology for fast detection of genetic materials. This method was used successfully for detection of IBV (6,7). In this study RT-PCR performed for viral RNA extracted from infected CAM cells to amplify of 1025 bp. The use of this technique for virus detection has been reported previously (4).

The conclusion of this study that CAM cells have used for the first time to isolate and adapt IBV successfully which could open new horizons to use these cells for the vaccine production in the future.

### **Acknowledgments**

This project was supported by RUGS, Universiti Putra Malaysia (Grant no 91091).

### **References**

1. Office international des Epizootics (OIE). Avian infectious bronchitis, chapter 3.6.6. In Manual of standards for diagnostic test and vaccines, 3rd Ed. OIE, Paris. 1996; PP: 539- 548.
2. Cavanagh D, Naqi SA. Infectious bronchitis. In B.W. Calnek, H.J. Barnes, C.W. Bearol, L.R. Mc Daugald, and Y.M. Saif (eds). Disease of Poultry 10th Ed. Iowa University Press: Ames, IA, 1997; PP: 511-526.
3. Cook JKA, Orbell SJ, Woods MA, Huggins MB. Breadth of protection of respiratory tract provided by different liveattenuated infectious bronchitis vaccines against challenge with infectious bronchitis viruses of heterologous serotypes. Avian Pathol. 1999; 28:477- 485.
4. de Wit JJ. Detection of infectious bronchitis virus. Avian Pathol. 2000; 29:71-93.
5. de Wit JJ, Mekkes DR, Kouwenhoven B, Verheiden JHM. Sensitivity and specificity of serological tests for infectious bronchitis virus antibodies in broilers. Avian Pathol. 1997; 26:105-118.
6. Capua I, Minta Z, Karpinska E, Mawditt K, Britton P, Cavanagh D, Gough RE. Co-circulation of four types of infectious bronchitis virus (793/B, 624/I, B1648 and Massachusetts). Avian Pathol. 1999; 28: 587-593.
7. Cavanagh D, Mawditt, K, Sharma M, Drury SE, Ainsworth HL, Britton P, Gough RE. Detection of a coronavirus from turkey poults in Europe genetically related to infectious bronchitis virus of chickens. Avian Pathol. 2001; 30: 365 -378.
8. Dhinakar GR, Jones RC. Infectious bronchitis virus: immunopathogenesis of infection in the chicken. Avian Pathol. 1997; 26: 677 -706.
9. Reed LJ, Muench H. A simple method for estimating fifty percent end points. Amer J Hygiene. 1938; 27:493-497.
10. Schalk AF, Hawn MC. An apparently new respiratory disease of chicks. J Am Vet Med Assoc. 1931; 78: 413-422.
11. Anon R. Proceedings of the Second International Symposium on Infectious Bronchitis, Rouischholzhausen Germany. 1991; PP: 96.
12. Mahgoub KM, Bassiouni AA, Manal A, Afify, Nagwa RS. The prevalence of infectious bronchitis (IB) outbreaks in some chicken farms. I. Spotlight on the status of IB outbreaks in some chicken flocks. J Amer Sci. 2010; 6(9):57-70.
13. Ignjatovic J, Sapats S. Avian infectious bronchitis virus. Rev. Sci. Off. Int. Epiz. 2000;19: 493-508.
14. Myint SH. Human corona virus: a brief review. Med Virol. 1994; 4: 35-46.
15. Gelb J Jr, Jackwood MK. Infectious bronchitis. In: A laboratory manual for the Isolation and Identification of Avian Pathogens. 4th Ed. AAAP. 1998; pp: 169-174.
16. Hopkins SR. Serological comparisons of strains of infectious bronchitis virus using plaque purified isolates. Avian Dis. 1974; 18: 231-239.
17. Otsuki K, Noro K, Yamamoto H, Tsubokura M. Studies on avian bronchitis virus (IBV). Propagation of IBV in several cultured cells. Archi Virol. 1979; 60:115 - 122.
18. Arshad SS, Al Salihi KA. Immunohistochemical detection of infectious bronchitis virus antigen in chicken respiratory and kidney tissues. In the Proceeding: 12<sup>th</sup> Federation of ASIAN Veterinary Associations Congress, 26-28 August. 2002;PP 51.